









Plush Meets Paradise

Across interiors today, spaces are becoming more immersive, tactile, and emotionally resonant. Designers are pairing restrained elegance with moments of saturated color, layering plush materiality with graphic clarity and artisanal detail. Rooms are grounded in texture yet alive with pattern and nuance, balancing tailored refinement with expressive warmth and a subtle sense of escape.

Evienne Silk & Wool Velvet Piping explores the beauty of material depth. Crafted from silk and wool, Evienne embodies a quiet opulence defined by richness and luminosity. Its luxurious dense pile offers an indulgent hand and refined weight. Silk lends clarity and a delicate glow, while wool grounds the color with dimension and consistency, allowing each shade to appear saturated, even, and softly radiant as light shifts across the surface. The interplay of fibers creates a velvet piping that is substantial and unmistakably luxurious. Offered in 33 nuanced hues, organized into thoughtful color families — from Alabaster and Doeskin to Wisteria, Dijon, Celestial, and Evergreen — Evienne brings tonal sophistication and plush refinement to upholstery and drapery applications.

Palm Royale offers a vibrant counterpoint. Inspired by the ease of resort living, the collection features embroidered and hand-printed borders celebrating palms, botanicals, and flamingos in a vivid yet curated palette. These tropical motifs evoke escapism, introducing warmth and atmosphere through bold graphic pattern and layered detail. Designs such as Palmetto Crest, Palmera Striped, Verdant Palm, and Palm Embroidered Borders combine embroidery and hand printing on faille and linen grounds, bringing rhythm and visual energy to a scheme. Vivid greens, radiant corals, warm golds, and select blues recall sky and sea while remaining elevated and livable.

Together, Evienne and Palm Royale demonstrate how trim can define architecture, carry color throughout a room, and transform interiors through material integrity and considered craft. The result is spaces that feel layered, expressive, and distinctly memorable.





CONTENTS

**Evienne Silk & Wool
Piping Collection**
6-9

Florida Showroom
10-13

Palm Royale
14-21

Within the Workroom
22-27

**Education Platform:
Innovative Lighting Applications**
28-29

Romaunt
30-31

Ashton
32-33

Technical Specs
34-37

Captions
38-39





Evienne Silk & Wool Piping Collection

Evienne is a collection of plush silk and wool velvet piping, offered in a curated spectrum of rich, tonal shades.



“Evienne is defined by softness, depth, and a broad, sumptuous color palette. The plush silk and wool velvet allows each shade to feel layered, rich, and quietly luxurious.”

Marisa Gutmacher
VP of Design



INTRODUCING: The Florida Showroom

We're delighted to announce the opening of our eighth flagship showroom in the South Florida Design Park, designed in partnership with Timothy Corrigan and Joseph Monsour. Created as a destination for the region's designers, we look forward to serving this vibrant community with a dedicated home base for all their passementerie needs.







Elegantly fringed skirts, timeless silhouettes, and soft bursts of joyful color fill every corner of the showroom, an ode to the radiant style and sophistication that Florida interiors are known for.





Palm Royale Collection

Palm Royale is a tropically inspired collection of embroidered and hand-printed borders, where palm fronds, flamingos, and lush botanicals are rendered in a vivid, resort-inspired spectrum of color.













*“PALM ROYALE WAS DESIGNED TO FEEL SUMPTUOUS AND
INDULGENT. THE PATTERNS AND COLORWAYS CAPTURE THE
SPIRIT OF TROPICAL LUXURY — LUSH, EXPRESSIVE, AND REFINED
— BRINGING A SENSE OF EASE AND ESCAPE INTO THE HOME.”*

*Marisa Gutmacher
Vice President of Design*



WITHIN THE Workroom

Behind every beautifully finished interior is a workroom translating an inspired vision into reality. Passed through skilled hands, lighting, furniture, and drapery call for countless unseen decisions that ultimately define the most breathtaking details. We invited three trusted workroom specialists to share how collaboration, craft, and expertise elevate a good application into a great one.





Munder & Sons

LIGHTING

Otto Munder, a talented finisher and lampshade maker, began his craft in 1963. Later joined by his sons, Otto and Mauricio, Munder & Sons has acquired decades of masterful handcraftsmanship, creating lampshades that have appeared in the projects of major interior designers across the United States and beyond.

SAMUEL & SONS: What considerations help ensure a trim looks beautiful not just on install day, but years later?

MUNDER & SONS: Trims that are made with natural fibers. Quality trims over time will naturally age and get an aged-softened patina. These trims get better with time. Also, a well-made trim can usually be salvaged and reused, while cheap trims will break apart.

S&S: Is there a type of trim you're particularly excited to work with right now, and why?

M&S: I really love Mark D. Sikes' new collection with Samuel & Sons. It's fresh and fun with a beautiful color palette. Trimmings are like candy to me, I'm always excited when receiving a package of trimming. But to your question, you can never go wrong with a beautiful gimp or fringe.

S&S: What's one piece of advice you'd give designers looking to elevate their project with trim?

M&S: Study the great designers like Miles Redd and Martin Brudnizki to learn how they use trimming. For instance, Mr. Redd trimmed a kraft paper shade with some tassel trim, this is beautiful! I would have never done that before seeing it.





Jouffre

FURNITURE

From Paris to London, Rabat to New York, Jouffre perpetuates the fine tradition of the upholsterer's profession, blending expertise with French luxury. Since 1987, Jouffre has been devoted to creativity guided by exacting standards and attention to detail. It is this excellence that has manifested in both prestigious awards and a place in some of the world's finest interiors.

SAMUEL & SONS: Is there a type of trim you're particularly excited to work with right now, and why?

JOUFFRE: We are very excited by the trend that recontextualizes traditional elements like rosettes, tassels, and gimps within more modern silhouettes and color palettes, viewing them through a post-modern lens.

S&S: What's one piece of advice you'd give designers looking to elevate their project with trim?

J: The best advice is to consider trim intentionally from the very beginning. Focus on its potential to transform the design, rather than treating it as an afterthought meant only for local contrast or accenting.

S&S: What's a finishing detail that clients always notice?

J: We are fortunate to work with highly discerning and detail-oriented clients, who often focus on seams and how materials meet. As we join fabric with metal, wood, and trimming, the connection must be flawless, perfectly reconciling materials that often have varying and conflicting properties.



SAMUEL & SONS: What separates a good trim application from a truly great one?

ROSEHYLL STUDIO: Layered applications. Using trim in unexpected or nontraditional ways elevates the design. Thoughtful layering creates depth and visual interest.

S&S: What is the most challenging trim application?

RHS: Shaping a straight tape, such as Cambridge, into curves or custom forms. Transforming something linear into organic shapes requires precision and technical finesse.

S&S: Is there a trim you are particularly excited about?

RHS: Materials with unique properties, such as velvet trims with sculptural texture or glass bead trims that catch the light beautifully. These details bring richness and dimension to a project.



RoseHyll Studio

DRAPERY

Robin Feuer is a third-generation designer who began sewing at just 14, learning traditional techniques from her grandmother and mother. With an award-winning background in fashion, Robin entered the world of interiors to create RoseHyll Studio. She was joined by Ariel Tensen, whose experience spans high fashion and modern home design, informed by more than a decade in the publishing industry at Condé Nast and Hearst Magazines.

Together, they bring a wealth of skill and discernment to their work.

THE COMMON THREAD

What makes for the best collaboration between a designer and a workroom?

JOUFFRE: We are deeply passionate about our work, and we value collaborators who share that enthusiasm. We also know that project schedules are demanding, but we consistently find that the best results come from a thorough, calm process with realistic timelines.

MUNDER & SONS: Designers are creative people by nature, but getting others to see their vision can sometimes be difficult. So, the more information a designer gives me, like photos, tear sheets, and references, the easier it is for me to understand their vision.

ROSEHYLL STUDIO: The best collaborations are built on clear communication and true partnership. Being available to talk through details and problem solve together makes all the difference. Mutual respect for each other's expertise strengthens the outcome.



At the start of a project, what information or direction sets you up for success?

JOUFFRE: The most helpful initial briefs clearly define the project's scope, keep the end client's needs and lifestyle in mind, convey a strong vision with context, and include a preliminary material palette.

MUNDER & SONS: I like spreadsheets with key details like sidemarks, photos, links, etc. This allows me to research each light and maybe prevent issues that might arise.

ROSEHYLL STUDIO: A designer with a clear vision allows us to execute with confidence. It is also helpful when the designer is open to technical suggestions.



What qualities do you look for in a trim before using it in a project?

JOUFFRE: When selecting trims, we first consider practicality, ensuring the intended use matches the trim's capabilities. For instance, on drapes, the trim should enhance the border without affecting how the fabric hangs. For upholstery, which involves high stress, we assess if the trim can be manipulated and stretched for a beautiful, long-lasting finish. Aesthetically, trim can add character or a tonal shift to a simple design, but we always ensure material harmony with the selected fabrics.

MUNDER & SONS: Let me just say that Samuel & Sons is simply the best for trims, I'm never disappointed. Trims that are made with natural materials and the highest craftsmanship. I know that sounds simple, but it's true. There isn't a short-cut for quality.

ROSEHYLL STUDIO: We evaluate how the trim interacts with the fabric. How will it lay? How will it behave once applied? What is the intended application? It must complement both the aesthetic and the structure of the window treatment.

Is there a detail or technique that deserves a resurgence?

JOUFFRE: We would love to see the flat tape trims of the past replace the overused double piping trim that is now common in contemporary upholstery of traditional designs. We believe flat tapes are far more elegant and clean, though they require greater attention to detail. We feel that extra effort always yields the best outcome.

MUNDER & SONS: I would like to see the use of wider borders on shades. They can be used on drum lampshades, or you can add a "cuff" onto the bottom.

ROSEHYLL STUDIO: Bullion trim used in a more modern, restrained application. Traditional elements can feel fresh again when paired with cleaner lines.



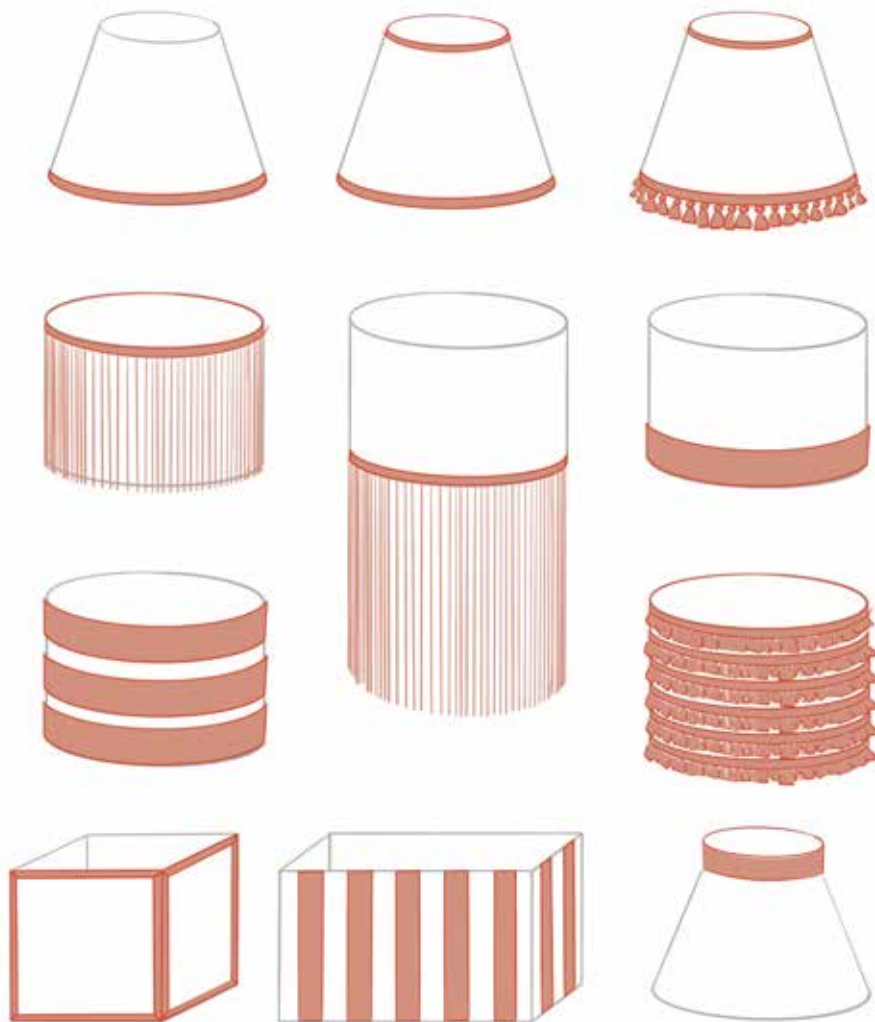


EDUCATION PLATFORM: INNOVATIVE LIGHTING APPLICATIONS

Lighting sets the ambience of a space, shaping how we experience form, color, and atmosphere. While light itself is essential, the details that frame it, whether a floor lamp, table lamp, or pendant, create an opportunity for thoughtful design.

The Education Platform explores inspiring ways to incorporate passementerie into lighting, while also providing an overview of standard lampshade styles, applications, and essential trim terminology to support the creative process.

To learn more visit samuelandsons.com/education



SAMUEL & SONS
MARTIN BRUDNIZKI



Romaunt Collection

Inspired by the romanticism and artistry of the Pre-Raphaelites, Romaunt, created in collaboration with And Objects cofounders Martin Brudnizki and Nicholas Jeanes, weaves a poetic narrative through exquisite fringes, tassels, borders, and rosettes in a palette of rich and opulent hues.







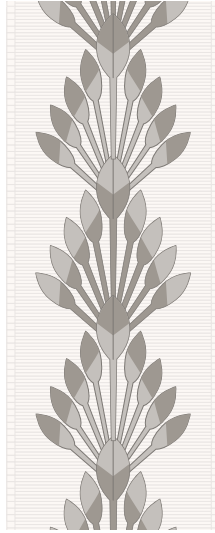
Ashton Collection

A refined wool collection of classic borders, fringes,
and cords in a palette of sophisticated colors.

Palm Royale Collection



BT-62213 2" (51 mm)
Tropic Embroidered Border /
Galon brodé Tropic
 Repeat / Raccord : 1.25" (32 mm)
 50% CO, 40% LI, 10% VI
 Colours : Blue Mirage, Jungle Green, Sunlit Citrus



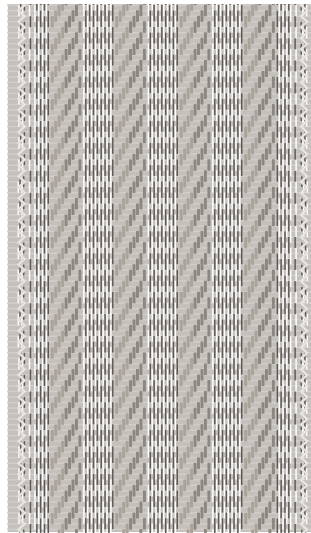
BT-62205 2.9" (73 mm)
Palmetto Crest Embroidered Border /
Galon brodé Palmetto Crest
 Repeat / Raccord : 3.75" (95 mm)
 58% CO, 42% VI
 Colours : Emerald, Lemon Tree, Ocean, Pink, Terracotta Vista



BT-62208 3.9" (98 mm)
Botanical Pavilion Embroidered Border /
Galon brodé Botanical Pavilion
 Repeat / Raccord : 7.65" (19.3 cm)
 51% CO, 49% VI
 Colours : Hibiscus Bloom



BT-62207 3.9" (98 mm)
Palm Embroidered Border /
Galon brodé Palm
 Repeat / Raccord : 3.75" (96 mm)
 52% CO, 48% VI
 Colours : Tropical Grove



BT-62206 4.25" (10.8 cm)
Palmera Striped Border /
Galon rayé Palmera
 80% Grass Fiber, 20% CO
 Colours : Bamboo Leaf, Fuchsia, Saltwater Sky, Tangerine



BT-62209 4.5" (11.5 cm)
Flamingo Court Embroidered Border /
Galon brodé Flamingo Court
 Repeat / Raccord : 7.7" (19.5 cm)
 75% LI, 25% VI
 Colours : Pink

Palm Royale Collection



BT-62212 3.15" (80 mm)
Paradise Garden Border /
Galon Paradise Garden
 Repeat / Raccord : 2.95" (75 mm)
 45% LI, 35% CO, 10% Spun PES
 Colours : Amazon



BT-62211 3.4" (85 mm)
Island Canopy Border /
Galon Island Canopy
 Repeat / Raccord : 5.5" (14 cm)
 45% LI, 35% CO, 10% Spun PES
 Colours : Moss



BT-62210 3.15" (80 mm)
Verdant Palm Border /
Galon Verdant Palm
 Repeat / Raccord : 2.95" (75 mm)
 45% LI, 35% CO, 10% Spun PES
 Colours : Rainforest Green

Evienne Silk & Wool Piping Collection



CT-62103 3/16" (5 mm)
Evienne Silk & Wool Piping /
Passepoil en soie et laine
 50% CO, 43% WO, 7% SE
 Colours : Alabaster, Blueprint, Blush, Carbon, Celery, Celestial,
 Chartreuse, Coral, Dijon, Doeskin, Dove, Dresden, Espresso,
 Eucalyptus, Evergreen, Hazelnut, Ivory, Juniper, Medallion,
 Mineral, Navy, Peacock, Pecan, Petal, Raspberry, Sapphire,
 Seafoam, Slate, Spa, Terra, Vermillion, Wedgewood, Wisteria

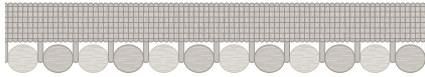
Romaunt Collection

SAMUEL & SONS
MARTIN BRUDNIZKI



CT-61732 3/16" (5 mm)
Romaunt Cord with Tape /
Câblé sur pied
100% PES

Colours : Arcadia Multi, Boreas Oyster, Mallais Gold, Ophelia Emerald, Proserpine Burgundy, Rêverie Terra, Rossetti Crimson, Waterhouse Blue



CT-61734 7/16" (11 mm)
Romaunt Beaded Cord /
Câblé perles

64% Plastic Beads, 36% PES

Colours : Arcadia Multi, Boreas Oyster, Mallais Gold, Ophelia Emerald, Proserpine Burgundy, Rêverie Terra, Rossetti Crimson, Waterhouse Blue



BR-61736 2" (51 mm)
Romaunt Blocked Brush Fringe /
Marabout effilé
100% PES

Colours : Arcadia Multi, Boreas Oyster, Mallais Gold, Ophelia Emerald, Proserpine Burgundy, Rêverie Terra, Rossetti Crimson, Waterhouse Blue



GB-61733 9/16" (16 mm)
Romaunt Gimp /
Lézarde
100% PES

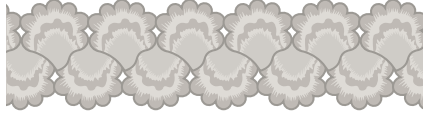
Colours : Arcadia Multi, Boreas Oyster, Mallais Gold, Ophelia Emerald, Proserpine Burgundy, Rêverie Terra, Rossetti Crimson, Waterhouse Blue



TF-61735 1.4" (35 mm)
Romaunt Beaded Fringe /
Frangé perles

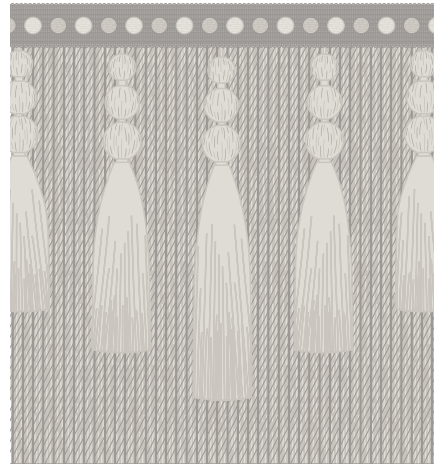
Repeat / Raccord : 13/16" (21.8 mm)
75% Plastic Beads, 25% PES

Colours : Arcadia Multi, Boreas Oyster, Mallais Gold, Ophelia Emerald, Proserpine Burgundy, Rêverie Terra, Rossetti Crimson, Waterhouse Blue



BT-61712 2" (51 mm)
Romaunt Embroidered Border /
Galon brodé
Repeat / Raccord : 1.25" (32 mm)
100% VI

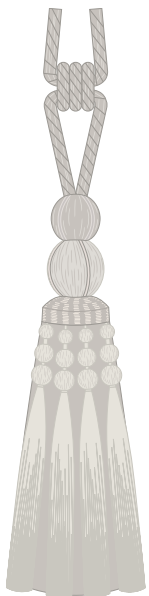
Colours : Arcadia Multi, Boreas Oyster, Mallais Gold, Ophelia Emerald, Proserpine Burgundy, Rêverie Terra, Rossetti Crimson, Waterhouse Blue



BU-61737 8.25" (21 cm)
Romaunt Tasseled Bullion Fringe /
Frangé moulinée mèches

Repeat / Raccord : 5.15" (13 cm)
79% PES, 21% Plastic Beads

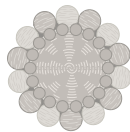
Colours : Arcadia Multi, Boreas Oyster, Mallais Gold, Ophelia Emerald, Proserpine Burgundy, Rêverie Terra, Rossetti Crimson, Waterhouse Blue



TT-61739
Romaunt Tassel Tieback /
Embrasse à glands

83% PES, 13.5% WD, 3.5% Plastic Beads
Height / Hauteur : 12.50" (31.8 cm)
Spread / Ouverture: 36" (91.4 cm)

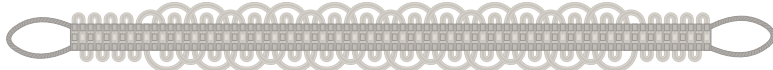
Colours : Arcadia Multi, Boreas Oyster, Mallais Gold, Ophelia Emerald, Proserpine Burgundy, Rêverie Terra, Rossetti Crimson, Waterhouse Blue



RT-61738
Romaunt Rosette /
Cartisane

90% Plastic Beads, 10% PES
Diameter / Diamètre : 2.25" (57 mm)

Colours : Arcadia Multi, Boreas Oyster, Mallais Gold, Ophelia Emerald, Proserpine Burgundy, Rêverie Terra, Rossetti Crimson, Waterhouse Blue



HB-61740
Romaunt Crete Holdback /
Embrasse guipure
100% PES

Spread (Including Loop) / Ouverture (Avec boucle) : 39.25" (100 cm)
Loop Length / Longueur de boucle : 4" (10 mm)

Colours : Arcadia Multi, Boreas Oyster, Mallais Gold, Ophelia Emerald, Proserpine Burgundy, Rêverie Terra, Rossetti Crimson, Waterhouse Blue

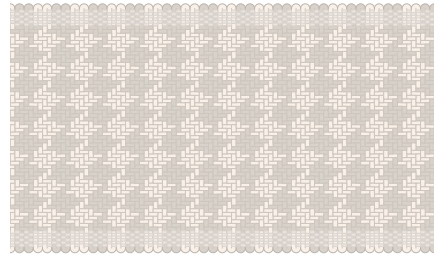
Ashton Collection



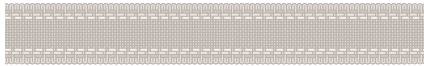
CT-61823 1/4" (6 mm)
Ashton Cord with Tape /
Câblé sur pied
 40% VI, 28% WO, 24% PES, 8% CO
Colours : Berrywood, Cotswold Gold, Foxglove, Heathcliff Brown, Lambswool, Savile Navy, Springhouse Mist, Verdant Moor



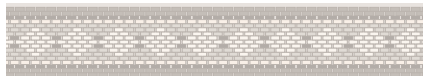
GB-61824 11/16" (18 mm)
Ashton Gimp /
Lézarde
 95% WO, 5% PES
Colours : Barley, Berrywood, Cornmeal, Cotswold Gold, Foxglove, Heathcliff Brown, Ivory, Lambswool, Orchard Port, Savile Navy, Sea Tarn, Springhouse Mist, Thornwood Green, Verdant Moor



BT-61829 3.25" (82 mm)
Ashton Houndstooth Border /
Galon pied de poule
 Repeat / Raccord : 3/8" (10 mm)
 58% WO, 42% PES
Colours : Berrywood, Cotswold Gold, Foxglove, Heathcliff Brown, Lambswool, Savile Navy, Springhouse Mist, Verdant Moor



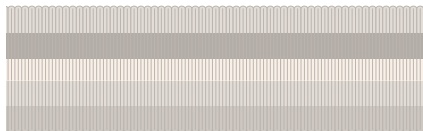
BT-61825 13/16" (20 mm)
Ashton Border /
Galon
 80% WO, 20% PES
Colours : Berrywood, Cotswold Gold, Foxglove, Heathcliff Brown, Lambswool, Savile Navy, Springhouse Mist, Verdant Moor



BT-61826 1" (26 mm)
Ashton Diamond Border /
Galon diamant
 Repeat / Raccord : 3/4" (19 mm)
 62% PES, 38% WO
Colours : Berrywood, Cotswold Gold, Foxglove, Heathcliff Brown, Lambswool, Savile Navy, Springhouse Mist, Verdant Moor



FR-61827 1.25" (32 mm)
Ashton Blocked Fringe /
Effilé
 Repeat / Raccord : 2.2" (56 mm)
 96% WO, 4% PES
Colours : Berrywood, Cotswold Gold, Foxglove, Heathcliff Brown, Lambswool, Savile Navy, Springhouse Mist, Verdant Moor



BT-61828 1.65" (41 mm)
Ashton Striped Border /
Galon rayé
 60% PES, 40% WO
Colours : Berrywood, Cotswold Gold, Foxglove, Heathcliff Brown, Lambswool, Savile Navy, Springhouse Mist, Verdant Moor



Cover: Decorative pillows featuring the Palm Royale Collection



Page 7: From left to right: Evienne Silk & Wool Piping in Mineral, Chartreuse, Peacock, Wedgewood, and Spa



Page 15: Palmetto Crest Embroidered Border in Pink and Calisto Triple Bead Fringe in Alabaster



Page 2: Flamingo Court Embroidered Border in Pink



Page 8: From top to bottom: Evienne Silk & Wool Piping in Blush, Wisteria, and Coral and Dorset Velvet Scallop in Coral



Page 16: Left: Julienne Piping in Milkweed, Tropic Embroidered Border in Sunlight Citrus, and Bali Cotton Tassel Skirt Fringe in Cream; right: Westport Brush Fringe in Beeswax and Verdant Palm Border in Rainforest Green



Page 4: From top to bottom: Kensington Onion Tassel Fringe in Sunset, Palmera Striped Border in Tangerine and Saltwater Sky, Ilana Cord with Tape in Honey, and Palmetto Crest Embroidered Border in Terracotta Vista



Page 9: Evienne Silk & Wool Piping in all available colors



Page 17: Westport Bullion Fringe in Beeswax and Island Canopy Border in Moss



Page 6: From top to bottom: Evienne Silk & Wool Piping in Wedgewood, Eucalyptus, and Spa



Page 14: Palmetto Crest Embroidered Border in Pink and Terracotta Vista



Page 18: Tropic Embroidered Border in Blue Mirage, Jungle Green, and Sunlit Citrus



Page 19: Pillow: MDS
Check Piping in Azure and
Palmetto Crest Embroidered
Border in Ocean; drapery:
Tropic Embroidered Border
in Blue Mirage



Page 30: Romaunt Beaded
Cord in Boreas Oyster



Page 20: From left to right:
Westport Brush Fringe in
Lakeside, Tropic Embroidered
Border in Jungle Green,
Westport Brush Fringe
in Spring Green, Palm
Embroidered Border in Tropical
Grove, and Tropic Embroidered
Border in Sunlit Citrus



Page 31: From top to bottom:
Romaunt Beaded Fringe,
Romaunt Tassel Tieback,
Romaunt Embroidered Border,
and Romaunt Tasseled Bullion
Fringe in Boreas Oyster
Fabric: Weitzner
Wallpaper: Weitzner



Page 21: Westport Bullion
Fringe in Red Coral and
Botanical Pavilion Embroidered
Border in Hibiscus Bloom



Page 32: Ashton Blocked
Fringe and Ashton Cord with
Tape in Cotswold Gold
Fabric: Nobilis



Page 28: Green Lamp: Dorset
Gimp and Dorset Ombré
Border in Leaf, Yellow Lamp:
Dorset Gimp and Dorset
Ombré Tassel Fringe in
Honey, Pink Lamp: Dorset
Cord with Tape and Dorset
Ombré Tassel Fringe in Coral,
Blue Lamp: Dorset Ombré
Tassel Fringe in Aquamarine



Page 33: Ashton
Houndstooth Border in
Lambswool, Foxglove,
Cotswold Gold, Heathcliff
Brown, and Berrywood





US: 212.704.8000
UK/EU: +44 (0) 20.7351.5153
FR: +33 (0)1 42.33.22.90
SAMUELANDSONS.COM

Passementerie
al fresco

SAMUEL & SONS IS TRIM.
samuelandsons.com

